

AN INTRODUCTION TO THE UCLA ACADEMIC SENATE

Prof. Ann R. Karagozian
Chair
UCLA Academic Senate

What is the Academic Senate?

- Vehicle through which University of California faculty share in the operation and management of the University

Who are Senate members?

- Ladder-rank (“tenured or tenure-track” faculty)
- Deans, Provosts, Chancellors, President

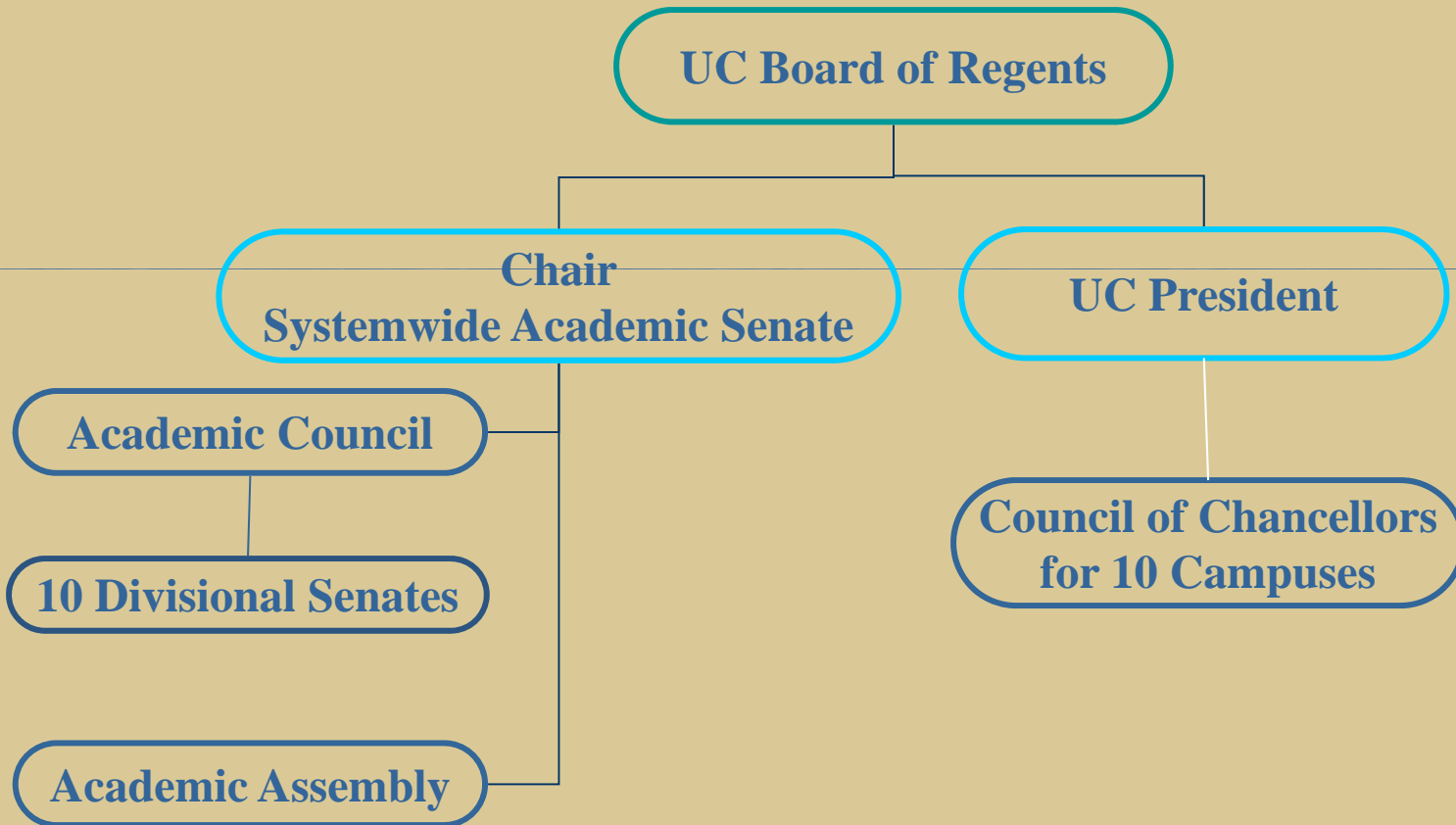
- [STANDING ORDER of the REGENTS 105.1 Organization of the Academic Senate](#)

UC Shared Governance

- Distinctive element of the University of California system
- Codified by UC Regents in 1920
- Recognizes that faculty are the drivers of the university
- Allows faculty, through the Academic Senate, to participate and share in the governance of the university

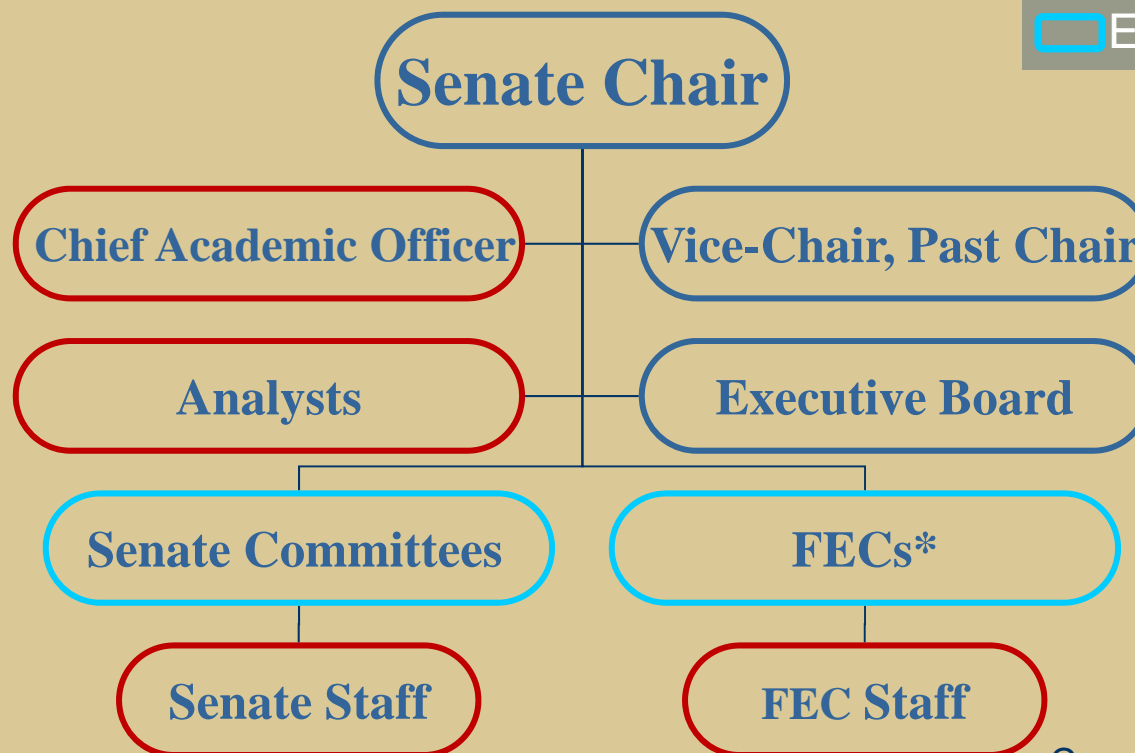
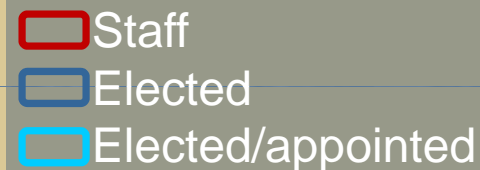
What are faculty responsible for?

- Setting admissions criteria
- Authorizing, approving and supervising all courses, curricula, and academic programs
- Determining degree requirements
- Advising the administration on faculty appointments and promotions
- Advising the administration on budget and financial planning



UCLA Division

Academic Assembly



* Faculty Executive Committees (Schools/College)

Senate

- **Parliamentary**
- Principal oversight of
 - Teaching
 - Research/Scholarship
 - Service
- Advises Chancellor on campus budgets and strategic planning
- Assesses faculty accomplishments, rights
- Collaborates with Chancellor and other administrators



Administration

- **Executive**
- Create and sustain a facilitative infrastructure
- **Finances**
 - Budget
 - Merit Increases/Raises
 - Spending
 - Accountability
- Hiring, promotions, firing
- Collaborates with Senate Chair and Senate bodies/committees

UCLA

ACADEMIC SENATE

Senate Councils and Committees

<http://www.senate.ucla.edu/committees/>

Teaching/Education

- Committee on Undergraduate Admission and Relations with Schools (CUARS)
- Undergraduate Council (UgC)
- Graduate Council (GC)
- Committee on Teaching (COT)
- Comm. on International Education (CIE)
- Intercollegiate Athletics Comm. (IAC)

Research/Scholarship

- Council on Academic Personnel (CAP)
- Council on Research (COR)
- Faculty Research Lectureship (FRL)
- Committee on Library & Scholarly Communication (COLASC)

Service/Outreach

- Committee on Committees (ConC)
- Committee on Continuing and Community Education (CCCE)
- Additionally CIE, CUARS, ...

Budget Planning & Resources

- Council on Planning and Budget (CPB)
- Committee on Development (COD)

Faculty Interests and Rights

- Grievance Advisory Committee (GAC)
- Committee on Charges
- Committee on Privilege and Tenure (P&T)
- Committee on Academic Freedom (AF)
- Committee on Rules and Jurisdiction (R&J)
- Faculty Welfare Committee (FWC)
- Committee on Diversity and Equal Opportunity (CODEO)
- University Emeriti and Pre-Retirement Relations Committee (UEPRRC)

UCLA has a tripartite mission:

- Teaching
- Research and Scholarly Endeavors
- *Service*

- Shared governance brings with it the responsibility of contributing to the community
- Through involvement with the Senate, faculty become part of the larger community and have the opportunity to learn, serve and lead
- *Faculty must participate in the discussions and analyses that will determine the University's future*

UCLA

ACADEMIC SENATE

**For more information on the
UCLA Academic Senate:**

<http://www.senate.ucla.edu/>